

# Introducing Pact



**Dan Jarman**  
Executive Director  
Pact UK  
[djarman@pactworld.org](mailto:djarman@pactworld.org)



**Dr James McQuilken**  
Programme Officer  
Pact M2M  
[jmcquilken@pactworld.org](mailto:jmcquilken@pactworld.org)

**The Association for Renewable Energy  
and Clean Technology**

**Thursday 22<sup>nd</sup> July 2021**



building  
local  
promise.

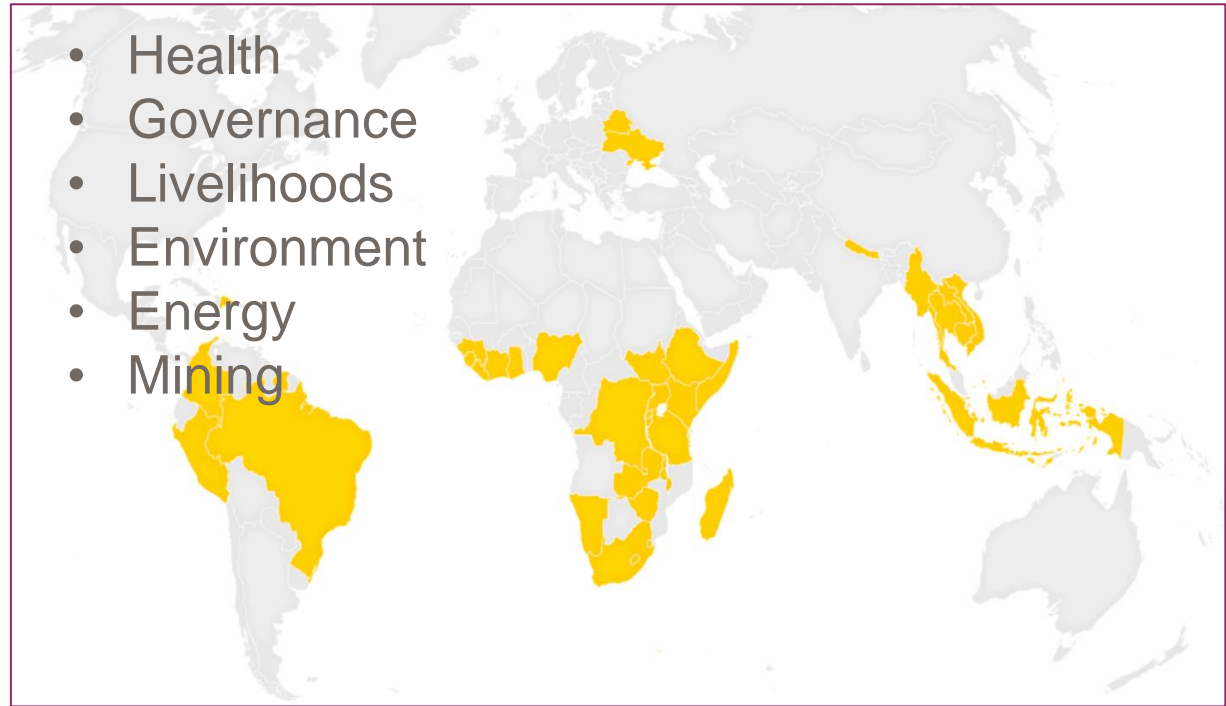


# Pact

*‘An international development organization at work in nearly 40 countries, Pact is the promise of a better future for all those who are challenged by poverty and marginalization.’*



<https://www.pactworld.org/>  
@PactWorld



- Health
  - Governance
  - Livelihoods
  - Environment
  - Energy
  - Mining
- 
- Founded in 1971: Capacity development
  - 4,000 staff worldwide
  - Washington
  - Pact UK – registered charity

# Pact: Mines to Markets (M2M)

*‘Pact’s Mines to Markets program – part of our global environment, energy and extractives portfolio – has been working to improve the ASM sector and the lives of artisanal miners for more than a decade.’*

- Transparency, traceability & due diligence
- Responsible production and sourcing
- LSM-ASM interactions
- Market access innovations
- Governance strengthening
- Formalisation
- Stopping child labor in mining
- Engaging women miners
- Cobalt, copper gemstones, gold, 3Ts, construction and industrial materials

218,079

NUMBER OF PEOPLE  
SERVED BY PACT'S  
MINING PROGRAMMING  
IN 2020



<https://www.pactworld.org/mines-markets>

# Clients & Partners

## Ethical Standards

- OECD Due Diligence Guidance
- ITSCI (International tin supply chain initiative)
- CRAFT Advisory Committee
- Field partnership with FairMined
- Certification Standards for Sustainable Diamonds
- Entreprise Générale du Cobalt (EGC) Responsible Cobalt Standard

## Global industry coordination bodies

- World Economic Forum Global Battery Alliance
- Voluntary Principles for Security and Human Rights
- OECD Working Group to Reduce Child Labor
- Minamata Convention
- Amazon Clean Gold Initiative



Foreign, Commonwealth  
& Development Office



THE WORLD BANK



RioTinto



AOC



THE TIFFANY & CO. FOUNDATION



Responsible Business Alliance

Advancing Sustainability Globally



GIA®

# Artisanal and Small-Scale Mining

**45 million**

PEOPLE DIRECTLY  
WORKING ASM  
ACROSS 80  
COUNTRIES



- X CHILD LABOUR**
- X LABOUR CONDITIONS**
- X MARGINALIZED**
- X LOW PAY**
- X 80-90% INFORMAL**



DECARBONISATION OF  
WORLD ECONOMY



RECHARGEABLE  
BATTERIES, ELECTRONICS,  
WIND, SOLAR ENERGY



500% INCREASE IN DEMAND  
FOR TECHNOLOGY METALS  
BY YEAR 2050

**~150,000-200,000**

ARTISANAL  
COBALT MINERS  
(DATA VARIES)



**270 MILLION PEOPLE  
INDIRECTLY  
SUPPORTED**



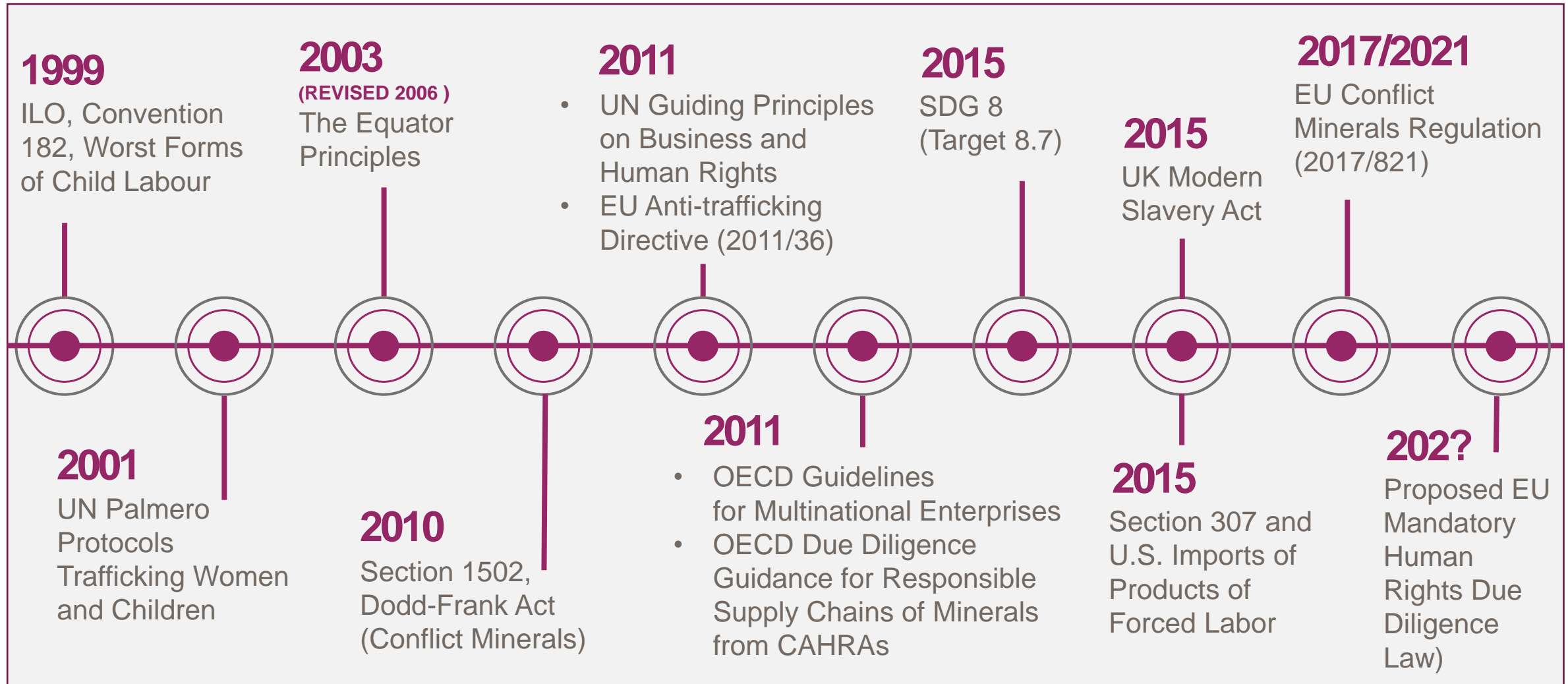
## CONTRIBUTION TO WORLD PRODUCTION

- 20-30% of gold
- 25% of tin
- 26% of tantalum
- 12-14% of cobalt
- 80% of gemstones
- Construction and Industrial Materials

**+ AND -  
IMPACTS  
ON ALL 17  
SDGS**



# International governance framework





# Why should I care?

- Moral responsibility
- Increasingly stringent responsible mineral legislation and industry expectations
- Managing risk to business and mineral supply
- Knowing your supply chain in full can identify opportunities for growth
- Environmental, Social, Governance (ESG)



# 1. Direct ASM engagement: Mutoshi Cobalt

## Actions:

- Removal of overburden (no underground)
- PPE & healthcare
- Clean drinking water, changing and sanitation facilities
- Training on mine planning, geology, mining, preparation, and occupational health and safety
- Partnership with government and independent verification

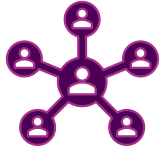
## Results:

- **6 million work hours** without lost time incident (Feb.2018-Mar.2020)
- **\$100** average monthly wage vs. **\$34** in comparison group
- **\$1 million per year** injection into local economy for every 1,000 miners
- **70%** of study participants stated an improvement in working conditions and safety
- **1 hour less** working per day due to improved efficiency, ability to spend more time with family
- **Women empowered** by upskilling into better paid roles





# 1. Direct ASM engagement: Child labour



- **Social responsibility:**  
> 285,000 people sensitized on WFCL



- **Systems strengthening:**  
6 governance structures supported through training



- **Economic empowerment:** savings and loans groups, >1,600 people access finance



- **Supplier Responsibility:** training ASM companies and cooperatives

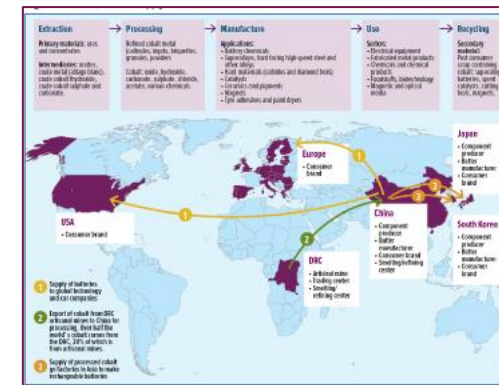
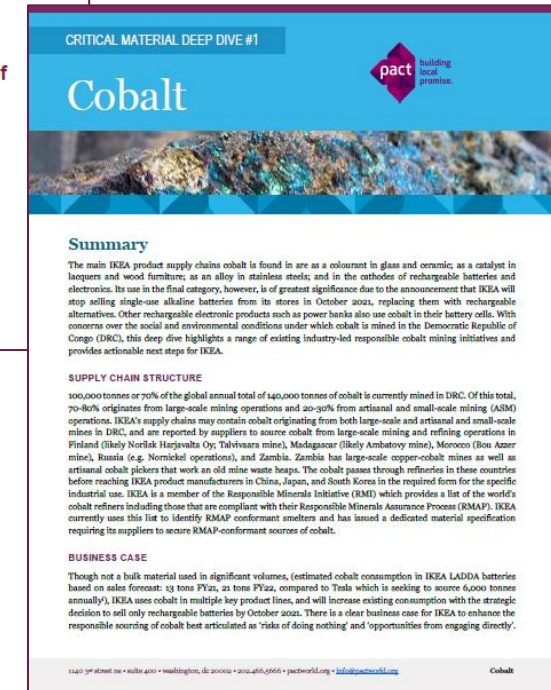


- **Vocational Education:** apprentices vocational education: tailoring, hairdressing, mechanics, animal husbandry etc.



## 2. Supply chain mapping

- Mineral Deep Dives
- Material risk registers
- Understanding responsible sourcing legal frameworks and industry initiatives
- Supplier engagement
- C-suite engagement
- Working groups
- Advisory services
- Project design and implementation





# 3. Research, training, advocacy workshops

- Multistakeholder workshops: DRC and London, FCDO
- Research, education, training
- OECD Guidance
- Review UK Modern Slavery Act
- Senior Government and Technical Expert Q&A
- 2020: 506 participants
- 2021: >250 participants



# Thank you



**Dan Jarman**  
Executive Director  
Pact UK

djarman@pactworld.org



**Dr James McQuilken**  
Programme Officer  
Pact M2M

jmcquilken@pactworld.org

<https://www.pactworld.org/>  
[@PactWorld](#)



building  
local  
promise.

