



William Macalpine

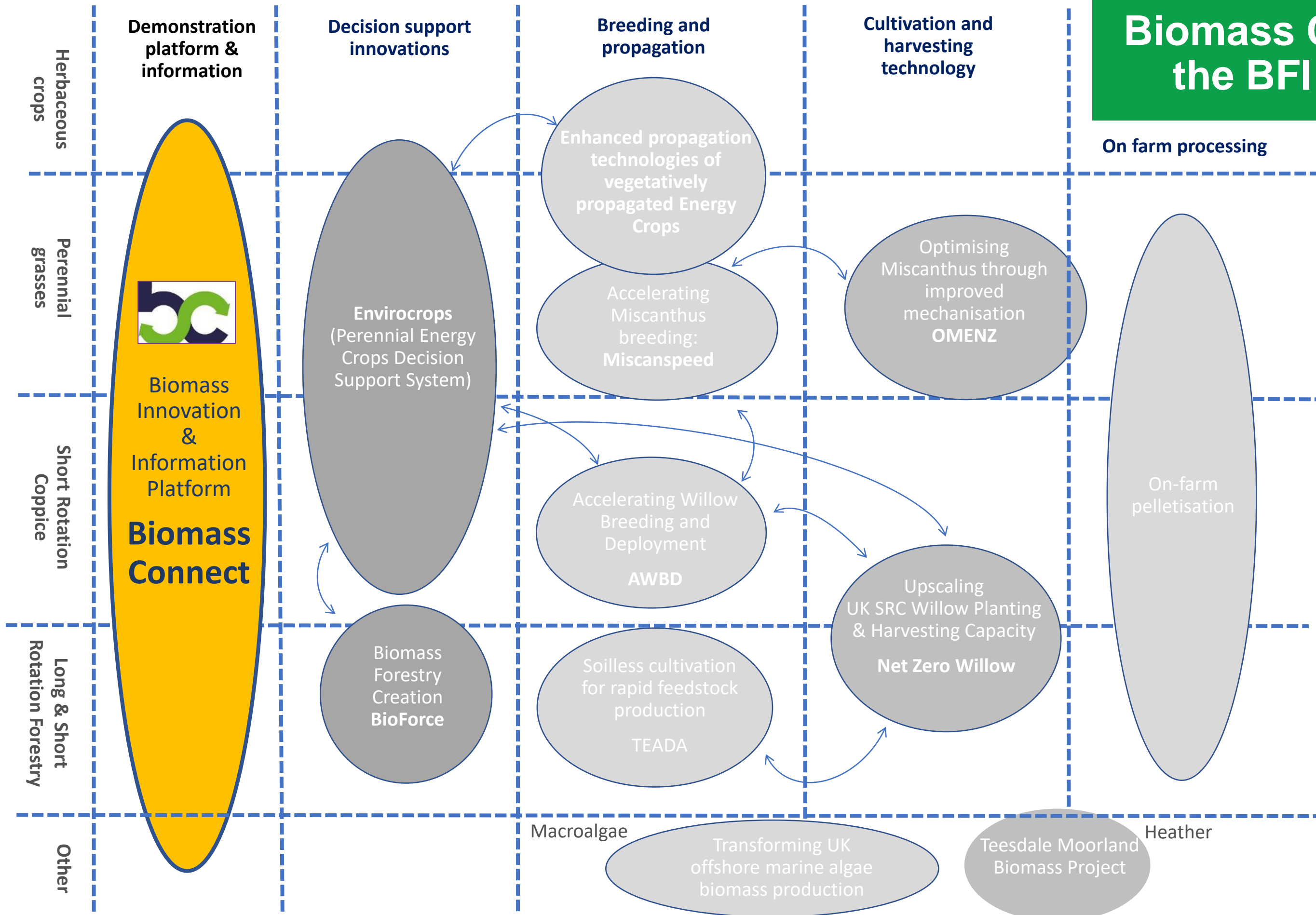
Rothamsted Research

Biomass Connect: Innovation & Information Platform

A multi-site demonstration platform supporting the growth of the UK biomass industry, as part of the drive towards net zero

- Raising awareness of biomass through demonstrations and knowledge sharing
- Independent information on biomass agronomy, economics and environmental benefits
- Geographic variation in biomass crop performance
- Supporting innovation development
- Robust evidence to policy

Biomass Connect within the BFI Programme



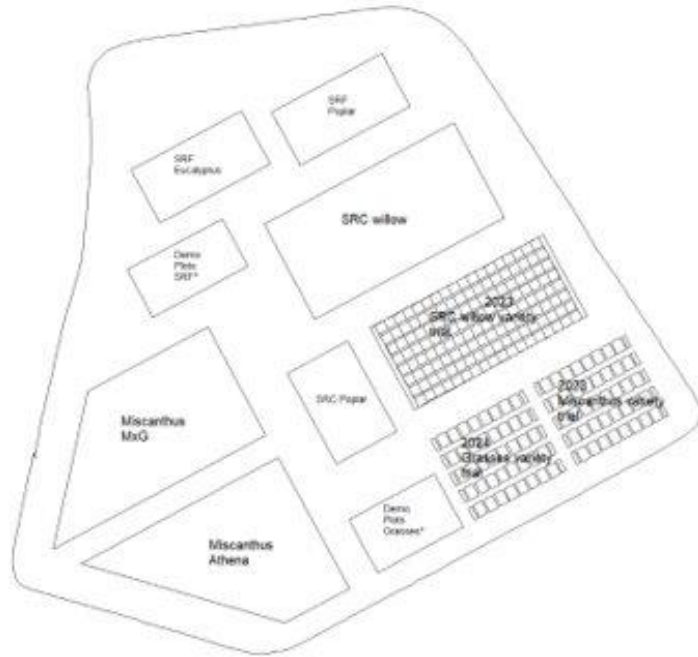
Biomass Connect – Hub Sites

Organisation	Site name
Rothamsted Research	RR North Wyke *
Agri-Food Biosciences Institute	AFBI Hillsborough *
NIAB	NIAB Headley Hall *
Newcastle University	NU Cockle Park
IBERS Aberystwyth	IBERS Trawsgoed *
Scotland's Rural College (SRUC)	SRUC Auchincruive
Scotland's Rural College (SRUC)	SRUC Boghall Farm*
Bio Global Industries	BGI Chesham

* = include variety trials



Bog Hall Farm, Edinburgh, SRUC



Biomass demonstration and variety trials

Biomass Demonstration

Short rotation coppice (SRC, 2-3 yr harvest cycle)

Short rotation forestry (SRF, 5-10 yr harvest cycle)

Perennial grasses – annual harvest

- SRC willow
- Miscanthus giganteus
- Miscanthus Terravesta 'Athena'
- SRC Poplar
- SRF Poplar
- SRF Eucalyptus
- SRF Alder
- Black Locust
- Sida
- Reed Canary grass
- Switch grass
- Silphium



Variety Trials

- The first multi-site variety trials for perennial biomass crops in the UK
- 5 sites across the 4 nations
- Generating data on variety performance across UK
- Varieties produced by leading UK and Swedish breeders



SRC Willow
Commercial 6-
way
1. Resolution
2. Endurance
3. Roth Cheviot
4. Ester
5. Inger
6. Lisa

SRF Eucalyptus

SRF Poplar

SRF Black Locust
Turbo

SRF Black Locust
Turbo Obelisk

SRF Alder

SRC Willow
Variety Trial
• 30 Varieties
1. RR
2. SalixEnergi
3. Silvanus
Forestry
4. EWB
5. EWBP

Rothamsted
DESNZ AWBD
Trial

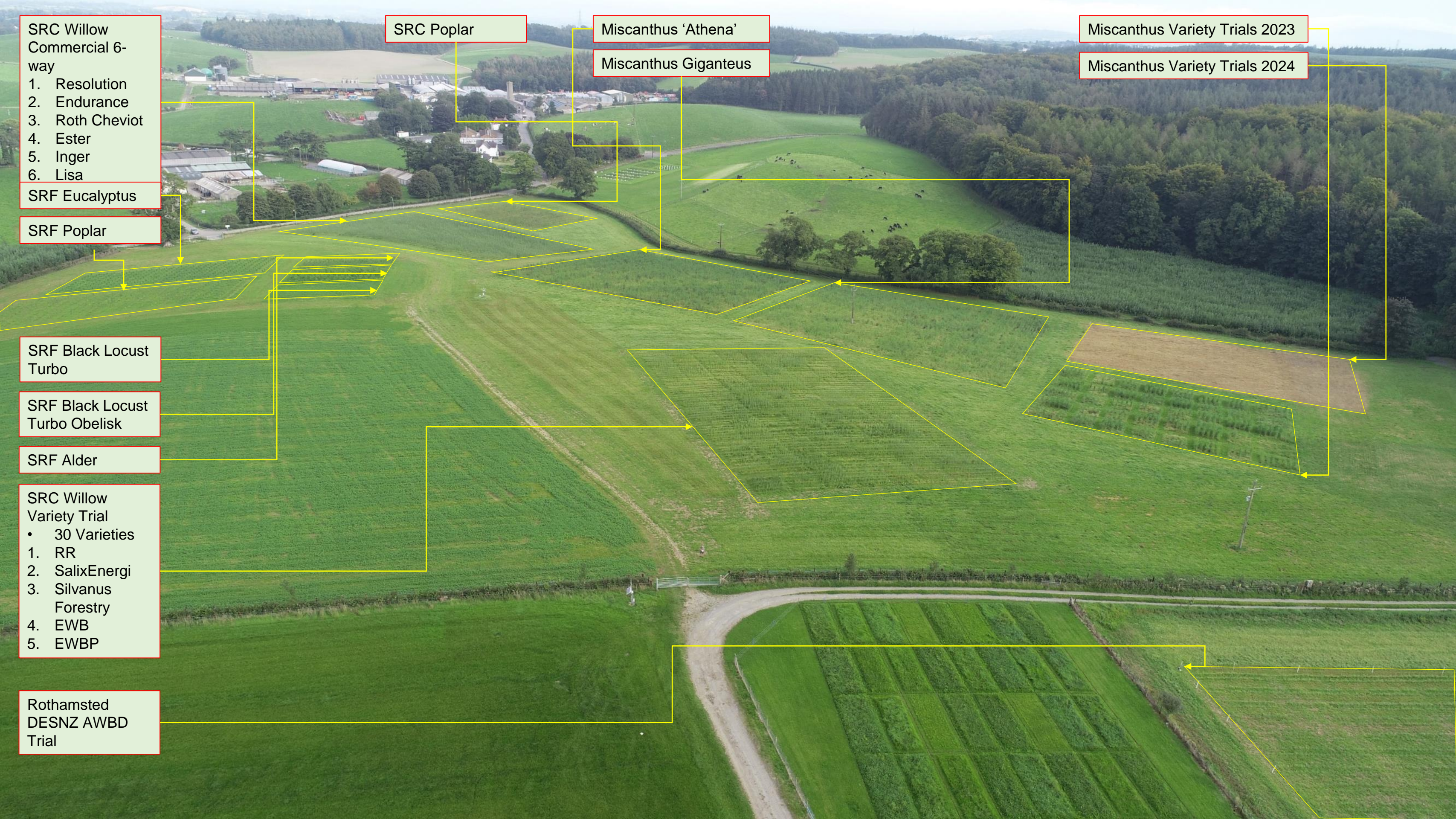
SRC Poplar

Miscanthus 'Athena'

Miscanthus Giganteus

Miscanthus Variety Trials 2023

Miscanthus Variety Trials 2024



Planting of SRF Eucalyptus in small plots



North Wyke design - Spacing 2m x 2m

0	2	4	6	8	10	12	14	16	18
2	1	1	1	1	1	1	1	1	1
4	1	1	1	1	1	1	1	1	1
6	1	1	1	1	1	1	1	1	1
8	1	1	1	1	1	1	1	1	1
10	1	1	1	1	1	1	1	1	1
12	1	1	1	1	1	1	1	1	1
14	1	1	1	1	1	1	1	1	1
16	1	1	1	1	1	1	1	1	1
18	1	1	1	1	1	1	1	1	1
20	1	1	1	1	1	1	1	1	1
22	1	1	1	1	1	1	1	1	1
24	1	1	1	1	1	1	1	1	1
26	1	1	1	1	1	1	1	1	1
28	1	1	1	1	1	1	1	1	1
30	1	1	1	1	1	1	1	1	1
32	1	1	1	1	1	1	1	1	1
34	1	1	1	1	1	1	1	1	1
36	1	1	1	1	1	1	1	1	1
38	1	1	1	1	1	1	1	1	1
40	1	1	1	1	1	1	1	1	1
42	1	1	1	1	1	1	1	1	1
44	1	1	1	1	1	1	1	1	1

1	2	3	4	5
E. dalrympleana	E. glaucescens	E. gunnii	E. nitens	E. uuringera
45	45	45	45	45

263,768 plants planted across the Biomass Connect network so far



How can you get involved or access information?



Website – www.biomassconnect.org

<https://www.biomassconnect.org/comms-newsletter-sign-up/>

Technical literature

Hub site
information

News & updates

New media content

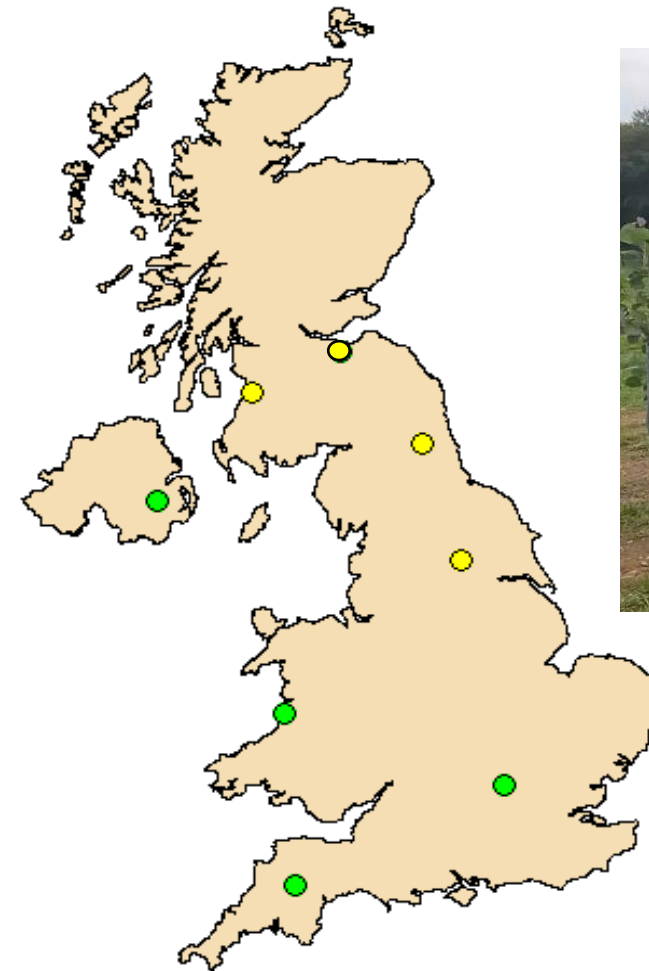
Events programme



www.biomassconnect.org

Hub and Spoke site demonstration events

- Crop demonstrations
- Peer-to-peer engagement
- Innovation & technology demonstrations



1 st November 2023	Biomass in a Northern Climate SRUC Boghall Farm, Edinburgh
2 st November 2023	Biomass in a Northern Climate Auchincruive, Ayr

www.biomassconnect.org/whats-on



www.biomassconnect.org

Industry focused webinar series

Webinar 1

16th Nov 2023 at 4pm

Biomass Crops and Water Management

Speakers: Chris Johnston (AFBI) ; TBD

Webinar 2

19th Dec 2023 at 4pm

Biomass Crops some Interesting Alternatives #2 - Hemp and Seaweed

Speakers: Lydia Smith (NIAB) ; Jamie Bartley (Unyte Group) ; TBD

Webinar 3

18th Jan 2024 at 4pm

Maximising Biodiveristy in your Biomass Crop Plantation

Speakers: Rebecca Rowe (UKCEH) ; Farmer TBD

Webinar 4

15th Feb 2024 at 4pm

Managing Fuel Storage and Drying to Best Practice Quality Standards

Speakers: Will Richardson (RDI Associates) ; Farmer TBD



Past Biomass Connect webinars on you tube

Land preparation: starting off on the right foot

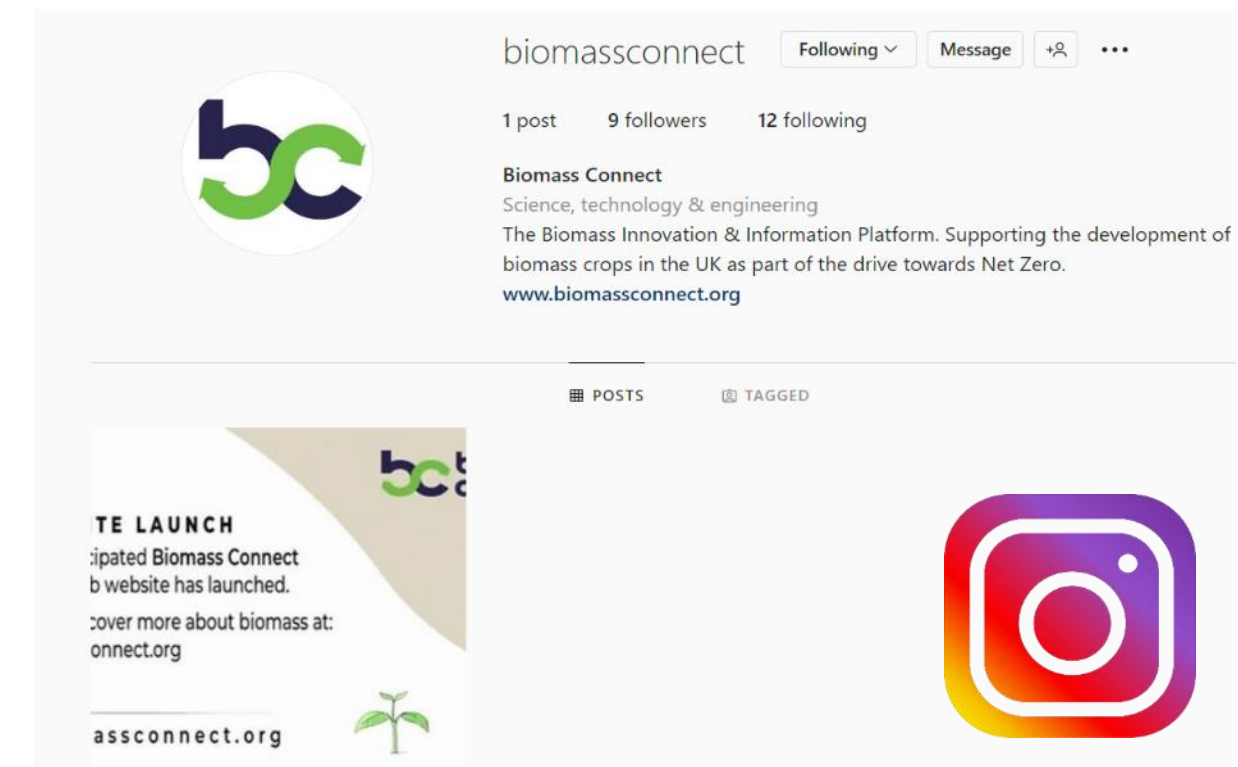
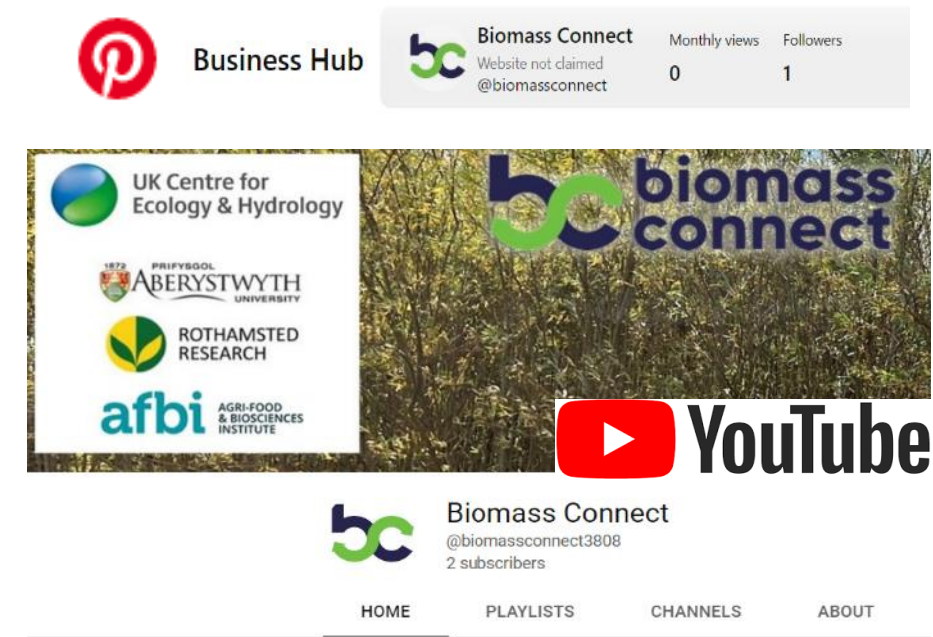
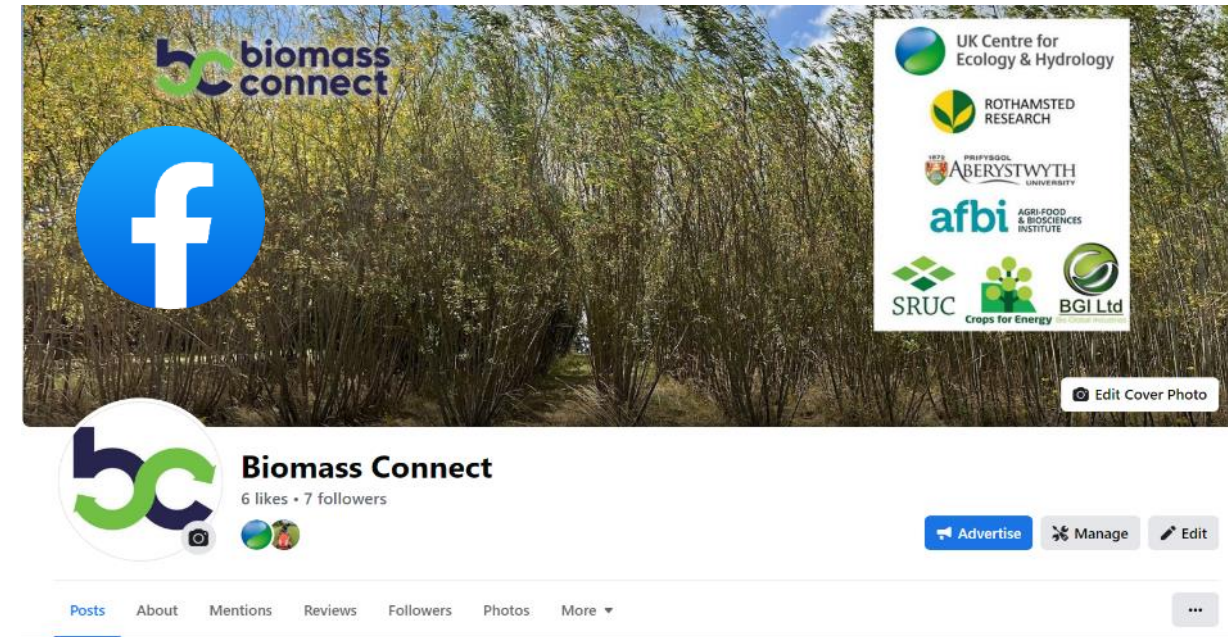
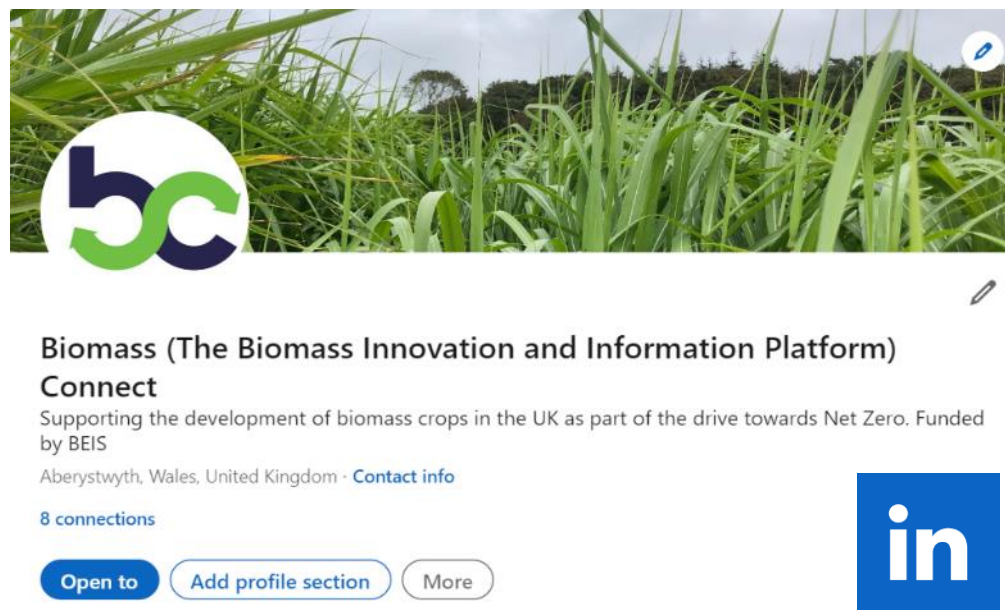
Emerging markets for biomass crops

Biomass crops: some interesting alternatives

Carbon markets and biomass crops

<https://www.youtube.com/@biomassconnect3808>

Social media – online communication





[biomassconnect.org](https://www.biomassconnect.org)

<https://www.biomassconnect.org/comms-newsletter-sign-up/>