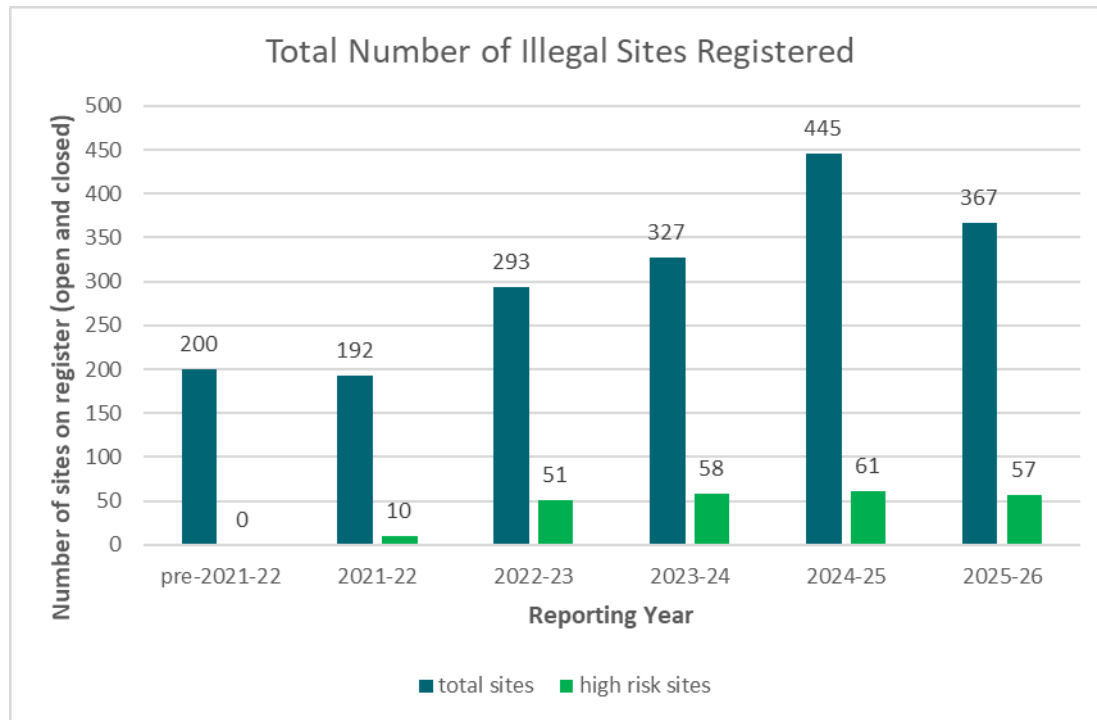


# Illegal Activity & Enforcement

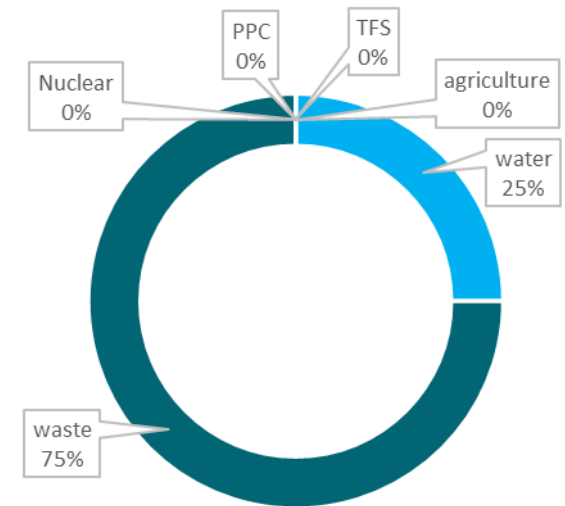
## Waste Industry Update



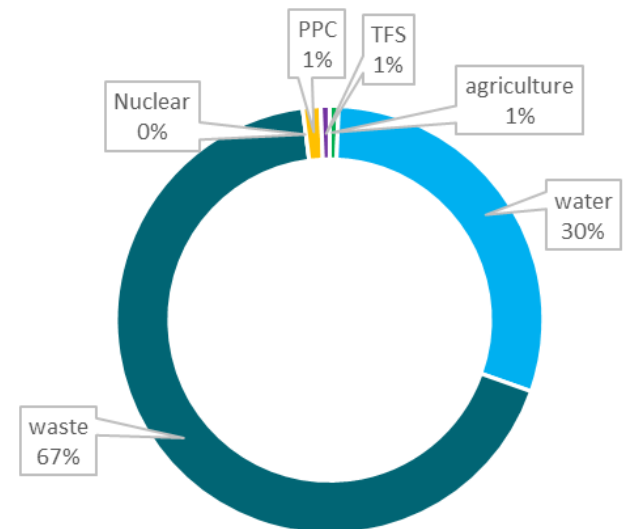
# Illegal Activity



illegal site/activity types (high risk)

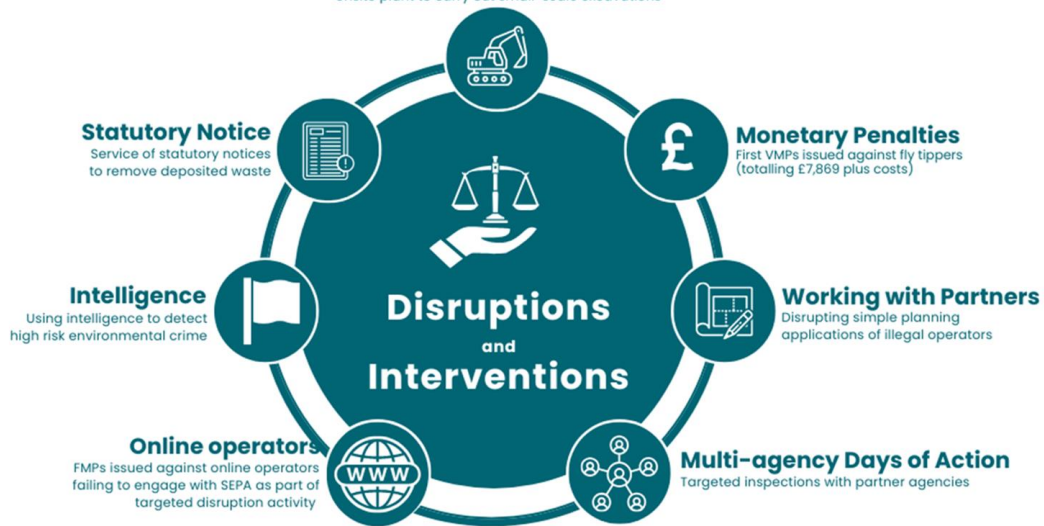


illegal site/activity types (all)

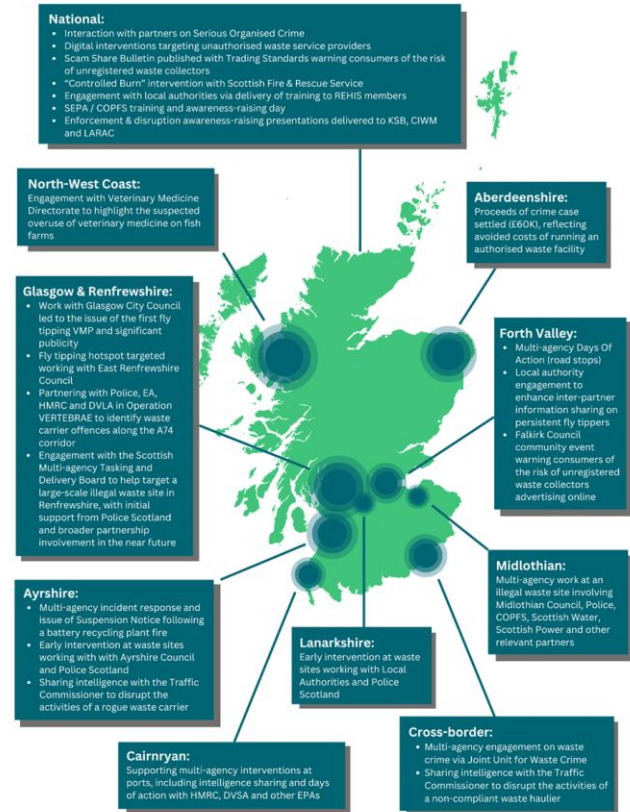


## Use of Powers of Entry and Investigation

Use of notices to prevent disturbance of deposited waste and require onsite plant to carry out small-scale excavations

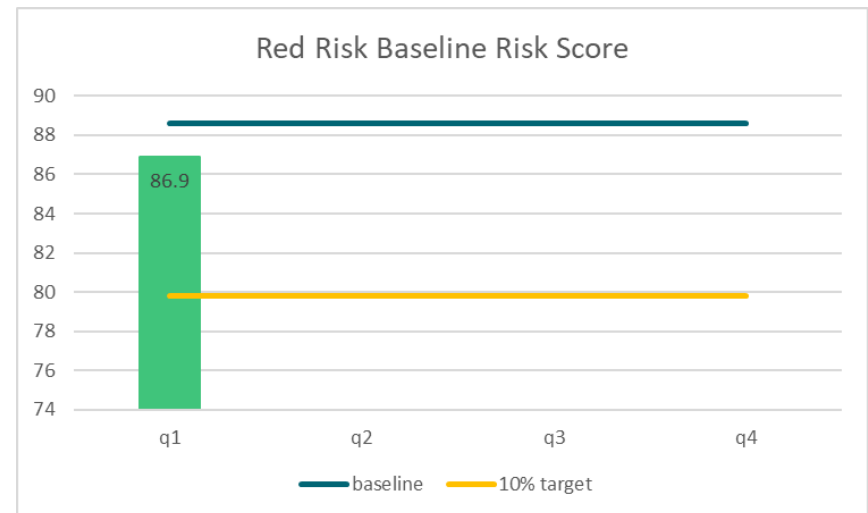
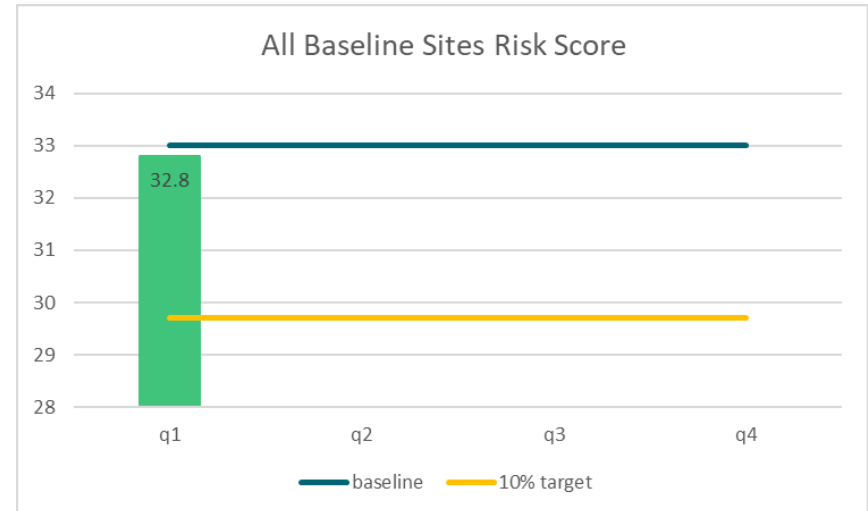
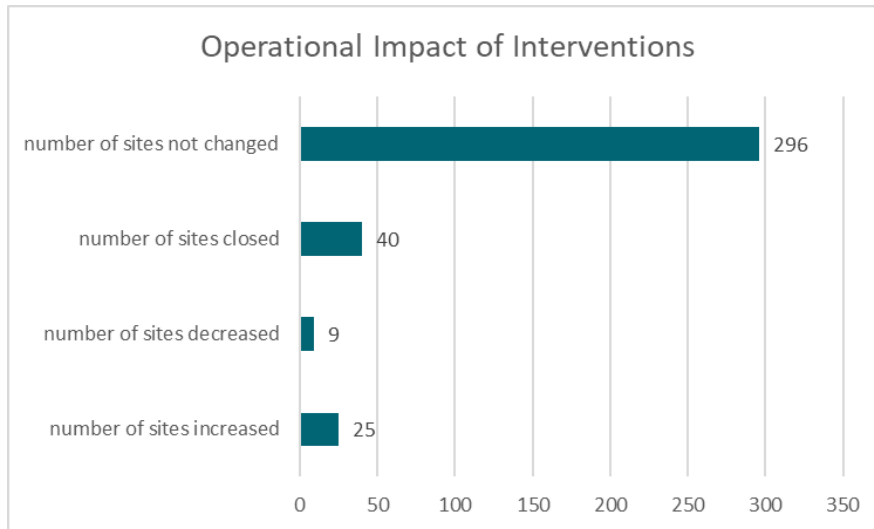


## Partnership Activity on Environmental Crime



Note: The activity marker sizes are indicative of the number of activities involved

# Interventions Approach

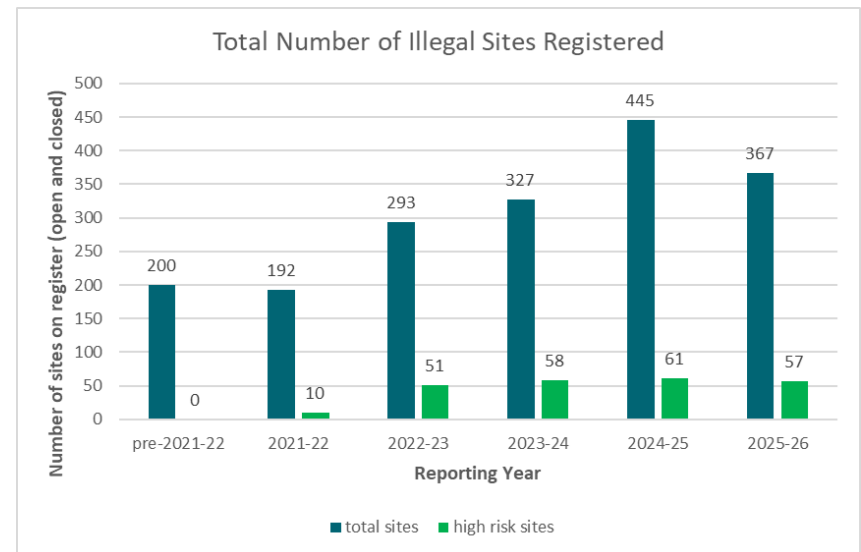
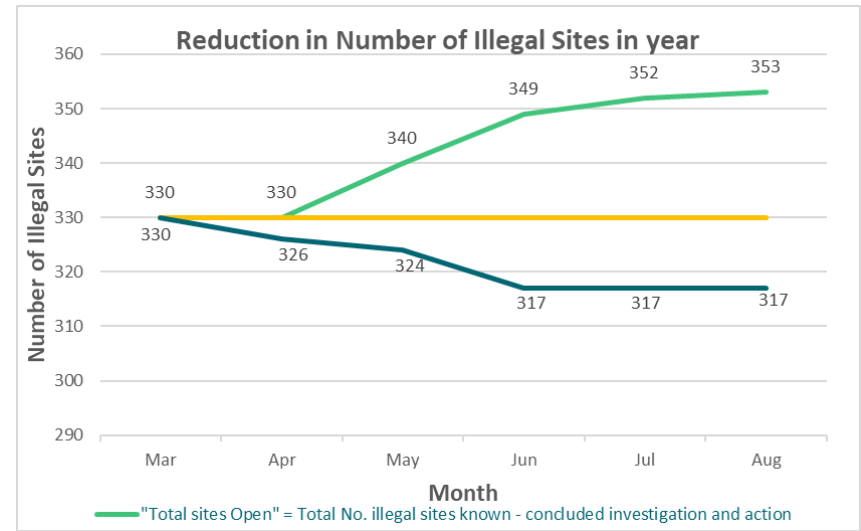


## Successes

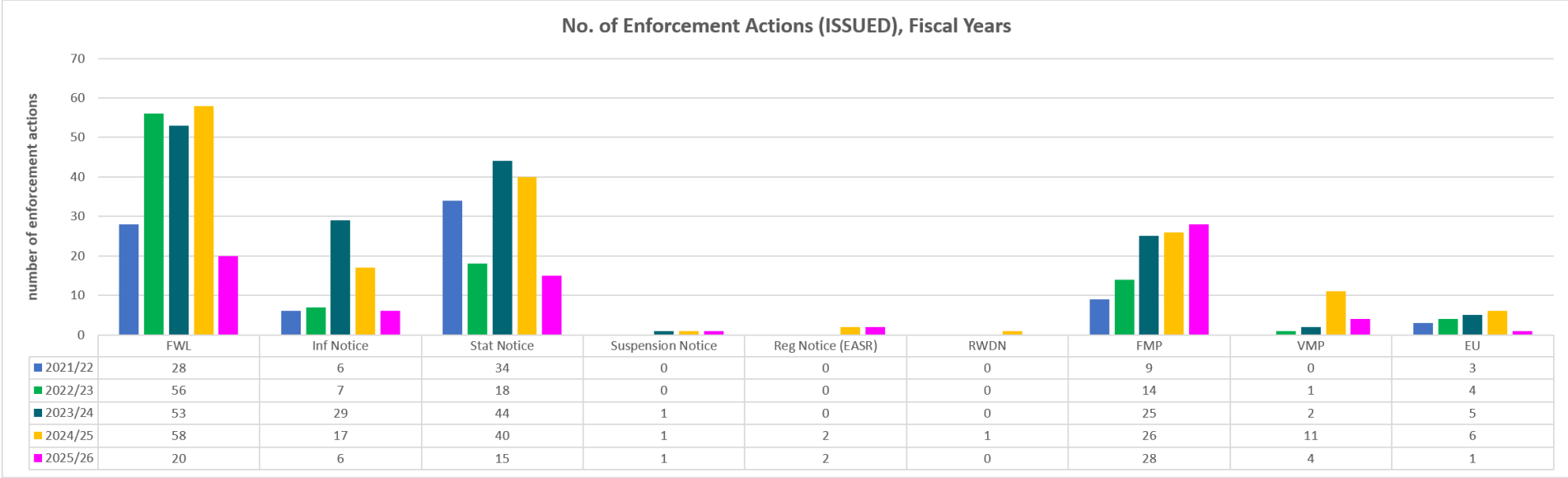
- Investigations and enforcement concluded at 40 illegal sites
- Continuing our systems journey

## Continued Success

- Let us know what is going on
  - Confidentially via intelligence
  - As a potential named witness via 0800 80 70 60



# General Enforcement



# Thank you

## Contact details

Amanda Reilly  
Head of Enforcement  
Email: [Amanda.reilly@sepa.org.uk](mailto:Amanda.reilly@sepa.org.uk)

[sepa.org.uk](http://sepa.org.uk)

